



## Product Brief

Egenera pServer™ Plug-in for  
Oracle Enterprise Manager 10g Grid Control

## Overview

The Egenera pServer Plug-in for Oracle Enterprise Manager 10g Grid Control integrates monitoring of the Oracle software and Egenera hardware infrastructures to simplify management. In a complex enterprise computing environment, this ability to centrally monitor and manage key system components improves insight into the overall infrastructure while enabling:

- Greater operational efficiencies
- Cost savings
- Faster issue resolution
- Higher availability
- Better service levels
- Better server utilization
- Improved planning

Egenera delivers a virtual datacenter through its Processing Area Network (PAN) architecture, BladeFrame® platform and PAN Manager™ software. The PAN architecture has advantages over legacy systems in its ability to create virtual servers from pools of resources. Stateless Processing Blade™ modules are associated with SAN-based LUNs to instantiate servers as needed. PAN Manager software configures disk assignments, network connections and power operations.

The integration of PAN Manager with Oracle Enterprise Manager gives the Oracle platform a unique opportunity to manage hardware. Being able to power servers on and off and reprovision hardware based on application demand from the Oracle interface provides unparalleled flexibility.

Oracle's Enterprise Manager software provides metrics-monitoring and remote-operation capabilities to third-party software and hardware via platform-specific Plug-ins. This data can be used with Oracle application metrics to provide timely event and threshold-limit responses, enabling higher utilization and faster failover.

## Obtaining Plug-In

For more information on obtaining the Oracle Plug-In, please call 1-508-858-3600.

## Functionality

The Egenera Plug-in provides three sets of hardware metrics for a given pServer (Egenera's term for a virtual server): Processing Blade details, CPU and board temperatures, and back-plane traffic. Because a pServer can be booted on any Processing Blade at any time, these details are vital to the user in determining acceptable operating conditions 24 hours a day.

The BladeFrame uses a point-to-point fabric to provide disk I/O and network connections for each pServer. The Egenera Plug-in gathers and monitors detailed information on the traffic among pServers, LUNs and external servers, providing an excellent way to monitor performance of both internal and external components.

## Installation

Two actions must be performed prior to deploying the Egenera Plug-in from Grid Control: establishing an SNMP interface on the BladeFrame through PAN Manager and opening security to allow the Oracle user to read monitoring data from the /proc filesystem on a given pServer.

The SNMP setup is performed on the BladeFrame Control Blade™ modules as follows:

```
snmp -G -I $PANIP -P $PORT -S monitor
snmpmgr -G -I $OEMIP
snmpmgr -G -I $pSERVERIP
```

where PANIP is PAN Manager external IP

PORT is an appropriate port for SNMP usage on the PAN Manager external IP

OEMIP is Oracle Enterprise Manager server IP

pSERVERIP is IP of pServer to be monitored; every pServer to be monitored must be added

Each pServer must be given access to its local /proc/egenera filesystem to obtain data, which is provided by allowing the Oracle user sudo privileges as follows:

```
as root user run "visudo"
add " oracle ALL=(ALL) NOPASSWD: ALL"
```

The Plug-in is delivered as a JAR file and imported into Enterprise Manager via the Setup tab. Once imported, the Plug-in can be deployed to any pServer monitored by the Oracle Enterprise Manager. Deployment is performed from the host target's Agent tab. The "add" button will list egenera\_pserver as an option. When selected, a set of initialization parameters are prompted for as follows:

Hostname	is PANIP to reach PAN Manager SNMP IP
Port	is PORT to access SNMP information from PAN Manager
Community	is community phase used for SNMP access, default is "public"
bFrameNumber	is presently limited to "1"

## Reports

Three reports are available from the Egenera Plug-in: Egenera pServer Information, Egenera pServer CPU/Board Temperature and Egenera pServer Backplane Traffic. Following is a sample of each.

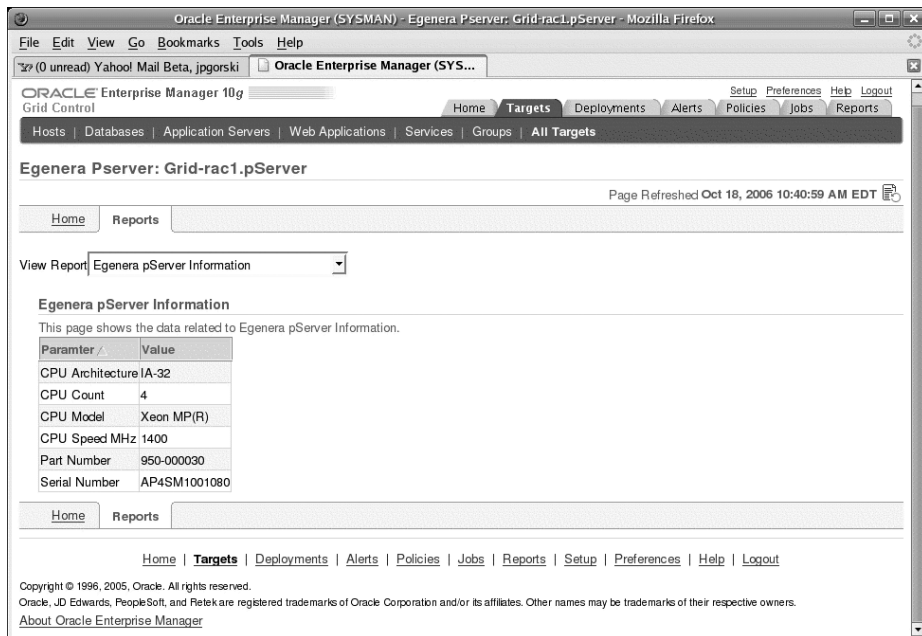


Figure 1: Egenera pServer Information



Figure 2: Egenera pServer CPU/Board Temperature

Reports

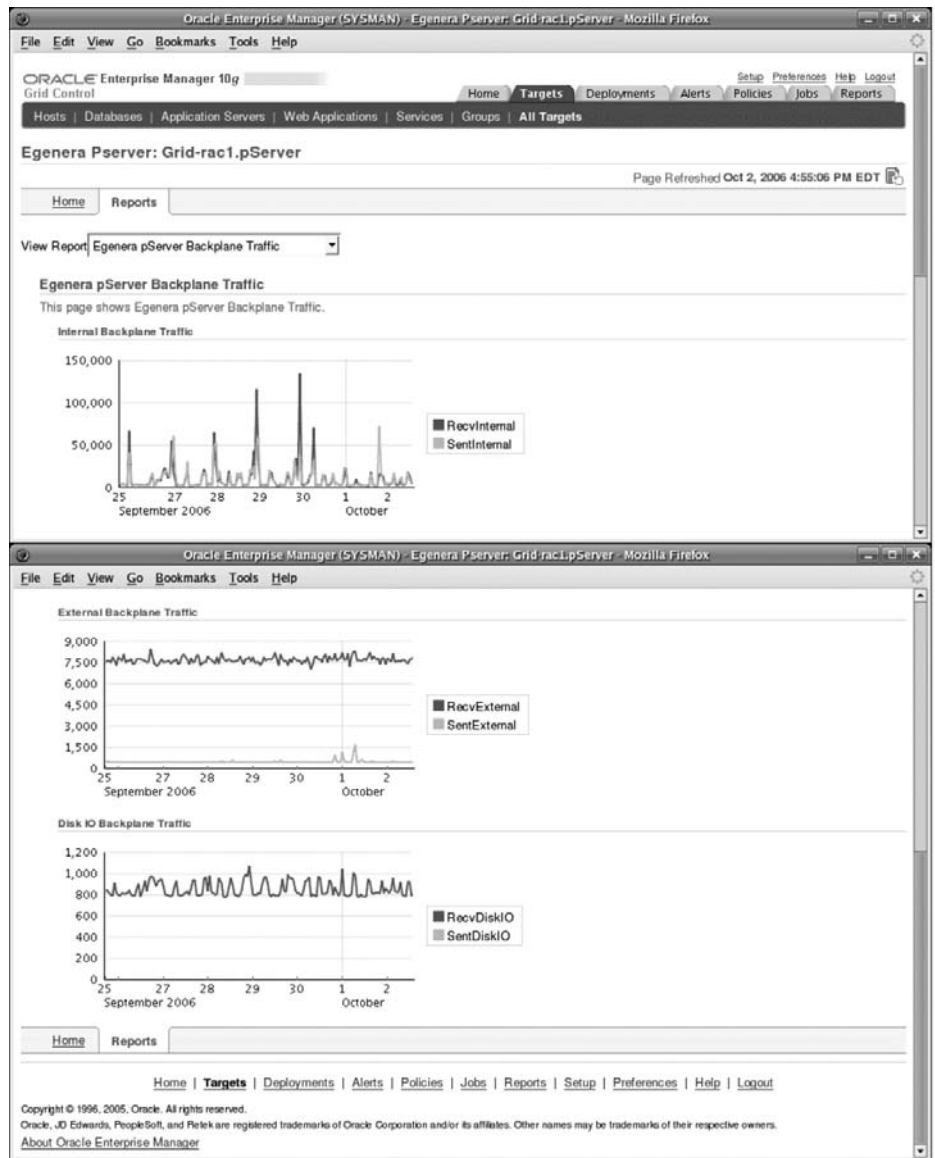


Figure 3: Egenera pServer Backplane Traffic



Corporate Headquarters  
 Egenera, Inc.  
 165 Forest Street  
 Marlboro, MA 01752  
 U.S.A.  
 Phone: 508-858-2600  
 Fax: 508-481-3114  
 www.egenera.com

European Headquarters  
 Egenera Ltd.  
 FSC Campus  
 The Boulevard  
 Cain Road  
 Bracknell, Berkshire RG12 1HH  
 Phone: +44 (0)1344 475237  
 Fax: +44 (0)1344 475775  
 www.egenera.com

Asia Pacific Headquarters  
 Egenera (Hong Kong) Limited  
 Suite 1903  
 Central Plaza  
 18 Harbour Road,  
 Wanchai, Hong Kong  
 Phone: 011 852-2877-9101  
 Fax: 011 852-2877-8611  
 www.egenera.com