



Maintaining a Resilient, Cost-effective SAP Environment with PAN Manager® Software by Egenera®

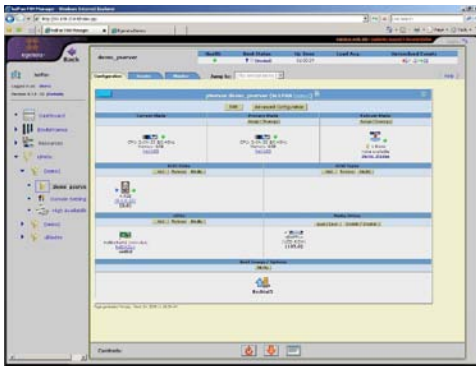
Running SAP applications and the SAP™ NetWeaver™ platform on the foundation provided by PAN Manager® can dramatically reduce the overall cost and complexity in your data center. PAN Manager complements and extends SAP’s mission-critical capabilities by providing seamless, point-and-click provisioning, high availability, and scalability to current and planned SAP implementations — whether virtualized or not.

The Challenge

The data center infrastructure underlying a multi-tiered SAP landscape can be complex, especially for companies with extensive volumes of automated business data and processes. This infrastructure — made up of client and server hardware, operating systems, storage systems and networks — provides the computing environment necessary for running SAP applications.

But companies can fall short of achieving the levels of availability, manageability, scalability and cost-effectiveness they expect from their infrastructures because they rely on costly, time-consuming practices such as

- maintaining static server configurations
- over-provisioning resources
- employing labor-intensive maintenance procedures
- managing expensive availability systems
- managing distinct physical and virtual servers



PAN Manager software provides a single point for configuring, managing and monitoring your SAP infrastructure resources.

Consequently, data center infrastructures become segmented, brittle and difficult to manage over time. And the budgetary and competitive costs of this strategy can only grow because of the need to support continuously changing business demands.

Enabling the Reliable, Dynamic Data Center

PAN Manager software aggregates servers into pools of physical processing resources — just as a storage area network (SAN) creates virtual pools of data storage. This approach provides IT administrators the flexibility to assign physical or virtual SAP components to servers based on processor and memory requirements, without having to worry about hardware or software configurations. PAN Manager automatically provisions servers with the appropriate software stacks, storage resources and network identities.

	SAP NetWeaver Application Characteristics	Complementary PAN Manager Features
Availability	Traditional hardware platforms running SAP applications require a 1:1 high availability failover ratio	Egenera PAN architecture pools high availability resources and provides out-of-the-box, automatic hardware failover
Manageability	SAP hardware deployments support large, mission-critical enterprise business operations	PAN Manager software provides a single point of control for the hardware infrastructure that runs SAP applications
Scalability	SAP NetWeaver and its adaptive computing capabilities enable horizontal scaling of SAP applications	PAN Manager dynamically assigns pooled resources to SAP application services based on user demand

Maintaining a Resilient, Cost-effective SAP Environment with PAN Manager Software by Egenera

PAN Manager Use Cases

Cloning an SAP System

Business Challenge: A manufacturing company is undergoing an enterprise-wide migration to SAP. To minimize any potential disruptions, they want to have training, support and QA mirror production as closely as possible.

Task: Create a duplicate SAP production system for training, support and QA.

Operations: Create a copy of the SAP databases. Copy SAP software configuration profiles using PAN Manager. Adapt the configuration profiles as necessary for the new environment and databases. Identify and allocate physical servers. Start the configuration using PAN Manager.

Benefits: Clones the entire SAP landscape, including all interconnections and databases, without requiring physical configuration and without any downtime in production. Duplicates the production environment and maintains all network associations among SAP components.

“Since we knew we’d be running SAP and several other mission-critical services on the utility computing platform, 24x7 availability was a crucial requirement. We also looked at price, performance, flexibility and manageability as part of our evaluation,”

Vice President, SK C&C

Upgrading Hardware

Business Challenge: Following a recent merger, an online commerce site has seen its transaction volume increase by 20%. They need to migrate their portal to a larger server with minimal downtime and without impacting the rest of the SAP landscape.

Task: Move an SAP component from a dual-core to a quad-core processor.

Operations: Insert a quad-core server into the chassis. Use PAN Manager to automatically move an entire software stack to a new server.

Benefits: The server is automatically connected to storage and network resources. PAN Manager installs new hardware drivers and ensures that the identical software stack is moved to the new server.

Adding New SAP Applications

Business Challenge: In order to increase internal operational efficiencies, a software technology company has decided to implement additional SAP functionality. They need to meet aggressive testing schedules and not slip production deployment date.

Task: Add a financial application to the SAP landscape.

Operations: Create logical server definitions for the application, including operating, network identities and storage resources.

Benefits: The server definition need only be specified once and then used to migrate the new application into production.



East Coast Headquarters
Egenera, Inc.
165 Forest Street
Marlboro, MA 01752
U.S.A.
Main: 508-858-2600
Sales: 508-858-3600
Fax: 508-481-3114
www.egenera.com

West Coast Headquarters
Egenera, Inc.
5201 Great America Parkway
Suite 446
Santa Clara, CA 95054
U.S.A.
Main: 508-858-2600

Europe/Middle East/Africa
Egenera Ltd.
Egenera Ltd.
Squires House
205A High Street
West Wickham
Kent BR4 0PH
United Kingdom
Voice: +44 208 133 8678

Asia Pacific Headquarters
Egenera, K.K.
Shinjuku NS Bldg. 6F,
2-4-1 Nishishinjuku,
Shinjuku-ku
Tokyo 163-0806 Japan
Voice: +81-3-5321-7157
Fax: +81-3-5321-7158
japan.egenera.com